

2<sup>nd</sup> Quarter  
2025

# The Valley News

## Holiday Closures

May 26, 2025  
Memorial Day



June 19, 2025  
Juneteenth

**JUNETEENTH**

1640 High Street  
Williamsport, PA 17701  
Phone: (570) 323-9407 or  
(800) 326-9539  
Fax: (570) 323-2154  
www.wbvfcu.org

ROUTING #: 231380133



## this issue

loan specials

annual meeting

VISA Credit Card  
password changes

## Join us for the Annual Meeting!

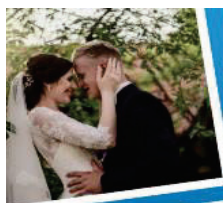
### Saturday, May 10, 2025

### Holiday Inn, 100 Pine St, Williamsport

**FREE Breakfast Buffet begins at 8:30am**

**Meeting starts at 9:00am! Fun giveaways too!**

**\*MUST RSVP TO ATTEND!** Please call Amanda at (570) 323-9407 ext. 3108

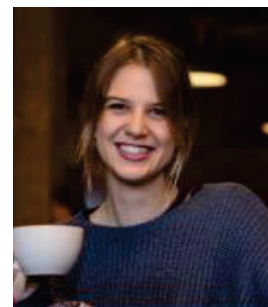


*From now until forever*  
for all of life's adventures  
**West Branch Valley FCU is here**

- Personal Loans for a wedding, vacation or birth
- Free Checking for your new joint account
- Mortgages to finance your dream home
- Share Certificates to save for the future

1640 High Street  
Williamsport, PA  
wbvfcu.org

West Branch Valley  
Federal Credit Union  
*Your Community Credit Union*



## A BETTER WAY TO REPAY

Refinance Student Loans  
as low as 3.25% APR\*



## ATTENTION

**VISA Credit Card Holders:**  
Password change requirements for [EZCardInfo.com](http://EZCardInfo.com) are in place. Passwords must be at least 12 characters long. Users will be prompted to update their passwords to meet the new requirements when their existing password expires.



APRIL 20<sup>th</sup>



MAY 11<sup>th</sup>



JUNE 15<sup>th</sup>

West Branch Valley  
Federal Credit Union  
*Your Community Credit Union*

## FINANCING DREAMS SINCE 1952



**Home Equity  
Loan Rate  
Discount Ends  
April 25th!  
Don't miss it!**

**0.50% Off Home Equity Loan Rates**  
[wbvfcu.org](http://wbvfcu.org) | (570) 323-9407

**Get ready for  
Summer  
Fun!**

**RV, ATV &  
Boat Loan  
Special ends  
May 30<sup>th</sup>!**

# adventure awaits

as low as **4.99%** APR\*

**RV, ATV & Boat Loans**



## SAVINGS ARE IN BLOOM

Auto Loans as low as  
**3.74%** APR\*

**Purchase or External Refi**



**Spring  
Auto  
Special  
April 28<sup>th</sup> –  
June 27<sup>th</sup>**